



United States
Department of
Agriculture

National Institute
of Food
and Agriculture

Appalachian Beginning Forest Farmer Program

Growing Opportunities Beneath the Canopy

John Munsell, Virginia Tech

Holly Chittum, Maryland University of Integrative Health

Beginning Farmer and Rancher Development Program Award No
[2015-70017-04754]



Beginning Forest Farmers

What is forest farming?

Why support it?

Appalachian Beginning Forest Farmer Coalition

Support beginning Appalachian medicinal plant forest farmers by forming a coalition that provides technical, administrative, and market sales training and improves access to farm resource inventory and plant habitat management services.

From Georgia to Pennsylvania

- NGO and GO network of 800+ beginning or new forest farmers
- ~33% below 40, ~50% are female, and 33% have limited resources
- Focus native medicinal plants and emerging forest grown markets
- Emphasis transfer, training, production, and verification



United States
Department of
Agriculture

National Institute
of Food
and Agriculture

Partners/Collaborators

Leadership and Technical Expert Team

- John Munsell, Virginia Tech, Project Director
- Holly Chittum, MD Univ of Integrative Health, Project Co-Director
- Eric Burkhardt, Penn State, Industry Coordinator, Technical Advisor
- Jim Chamberlain, USDA FS, Technical Advisor
- Jeanine Davis, NC State, Technical Advisor

Forest Farmer Network Leader/Coordinators

- Emily Lachinet, Appalachian Sustainable Development, Southern Range
- Katie Trozzo, Blue Ridge Woodland Growers, Southern Range
- Tanner Filyaw, Rural Action Ohio, Northern Range
- Susan Leopold, United Plant Savers, Northern Range

Extension Network Coordinators

- Bill Hubbard, SREF Director, Southern Range
- Tracy Coulter, PA DCNR, Northern Range
- National Agroforestry Center, USDA

External Evaluator: Nancy Franz, Iowa State



Key Approach(es)

- Indoor/outdoor education programs and stakeholder meetings
- Training and networking for extension agents and agency personnel
- Appalachian Forest Farmer Chronicle
- Mentorship program
- Coalition Clearinghouse on eXtension CoP website
- Seed distribution and equipment share forums
- Decision support



Overall Target Outcome

Farmers

- **300** plan to establish or expand medicinal plant forest farming
- **60** establish new or increase and/or modify operations
- **40** develop contractual relationships with nutraceutical companies

Extension and Agency Personnel

- **60** provide inventory and/or management planning services

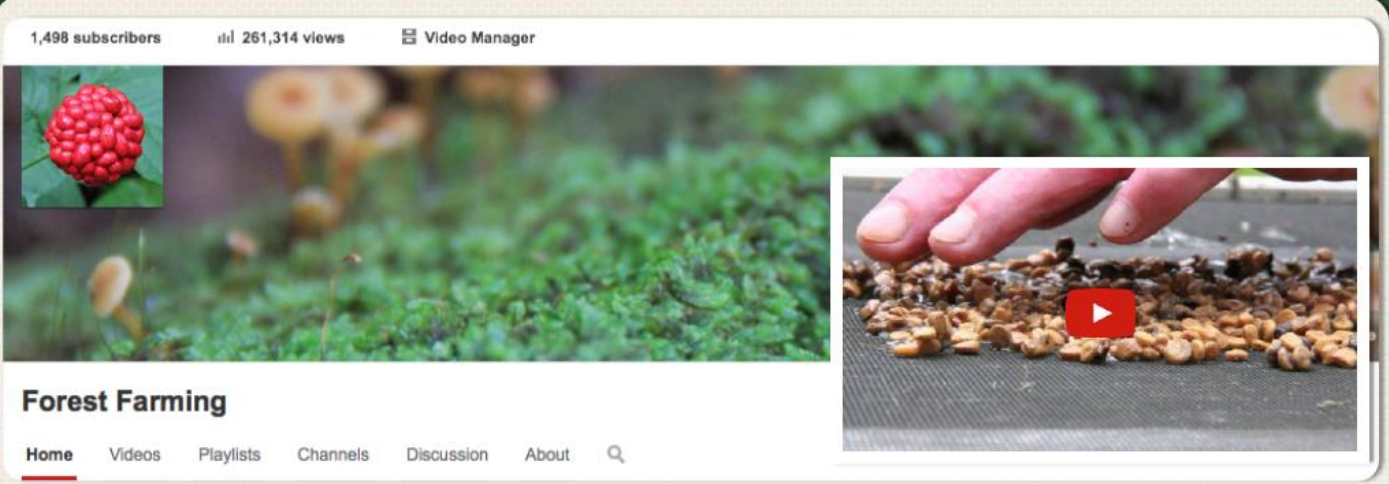


What do you have to share?

A P P E N D I C E S

FOREST FARMING

1,498 subscribers 261,314 views Video Manager



Forest Farming

Home Videos Playlists Channels Discussion About 🔍

Social Media Helps Germinate Interest in Forest Farming



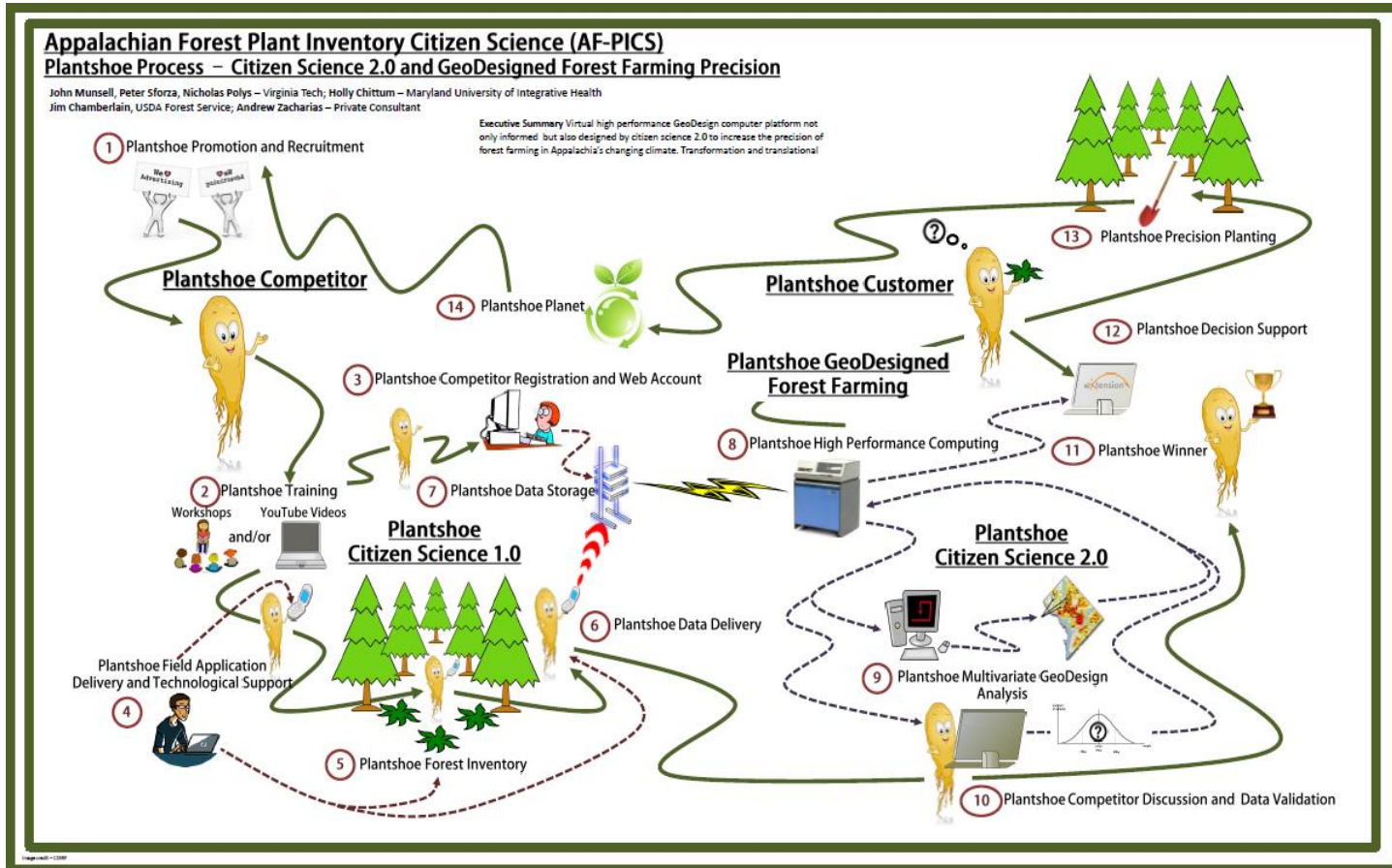
United States
Department of
Agriculture

National Institute
of Food
and Agriculture

What do you have to share?



What do you have to share?





What do you hope to learn from other projects?

- Long-term assessment techniques
- Training methods with emerging technology
- Distributed management approaches
- Mentorship program best practices



United States
Department of
Agriculture

National Institute
of Food
and Agriculture

Keep in touch!

**John Munsell, jfmunsel@vt.edu
Holly Chittum, hollykchittum@gmail.com**